

▼ Light Emitting Diodes

LED Bulk Packs

Bulk pack of 100 assorted LEDs in orange, red, green and yellow colours. Quantity of each colour may vary.



Price Per Pack	RRP	5+
Z 0004 3mm 100pk	16.80	12.55
Z 0002 5mm 100pk	17.50	13.00

5mm RGB LED

SPECIFICATIONS	RED	GREEN	BLUE
Forward voltage (typ.)	1.8V	3.2V	3.2V
Forward voltage (max.)	2.35V	4.0V	4.0V
Luminous Intensity (mcd)	500	1200	600
Viewing Angle	55°	55°	55°



ROHS

Price Each	RRP	4+	10+
Z 0999 3 Colour (RGB) 4 pin.	7.45	7.00	5.15

Chrome Bezel LED Panel Lamps

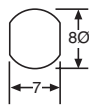
Mounting hole:	6.7mmØ.	Z 0264 Red 12V
Mounting depth:	27mm	Z 0265 Green 12V
Maximum panel thickness:	6.5mm	Z 0268 Red 24V
		Z 0269 Green 24V



Price Each	RRP	10+	25+
ALL	2.70	2.50	2.25

IP67 Waterproof LEDs With Bezel

Chrome bezel fitted with encapsulated waterclear LED and neoprene 'O' ring for waterproof seal. Ideal for marine, mining and agricultural applications.



ROHS

Forward current (typ.) 20mA
Forward voltage (typ.) 4V

Price Each	mcd	RRP	10+	25+
Z 0294 Red	5000	9.95	8.95	7.95
Z 0295 Yellow	4500	9.95	8.95	7.95
Z 0296 Green	6100	7.50	6.95	6.50
Z 0297 Blue	5800	7.50	6.75	5.95

Flush Mount LED Panel Lamps

Mounting hole:	6.7mmØ.
Mounting depth:	27mm
Maximum panel thickness:	6.5mm
Lead length:	≈90mm.



ROHS

Price Each	RRP	10+	20+
S 4027 Red 12V DC	2.50	2.25	2.05
S 4028 Green 12V DC	2.50	2.25	2.05
S 4029 Yellow 12V DC	2.50	2.25	2.05

12V Flashing Red LED

Mounting hole 8mm Ø. Mounting depth 18mm.
Lead length ≈180mm.



ROHS

Price Each	RRP	10+	20+
S 4021 Red 12V DC	4.95	4.60	4.20

Get a VIP-Trade Card & Save!

VIP-Trade customers are entitled to the purple price listed in this catalogue, regardless of quantity purchased. In many cases this discount can be up to 40% off the RRP. To become a VIP-Trade customer you must provide us with your ABN and register for an account.

Download an application form at www.altronics.com.au

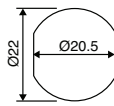
▼ Indicators

Jumbo 29mm 12/24V Panel Lamps

24V AC/DC	12V AC/DC
S 4030 Red	S 4050 Red
S 4031 Green	S 4051 Green
S 4032 Yellow	S 4052 Yellow
S 4033 Orange	S 4053 Orange
S 4034 Blue	S 4054 Blue
S 4035 White	S 4056 White



UL ROHS



Panel indicator lamps suitable for 12 or 24V AC/DC systems. Large 29mm diameter for easy viewing from long distance. 39mm mounting depth. Suits panel thickness up to 6mm. Screw terminal connection. P 8030-32 Standard wallplate with cutout to suit 29mm lamp series (lamps not included).

Price Each	RRP	10+	20+
ALL	6.95	6.25	5.55
P 8030 Dual cover wallplate to fit 1 lamp	7.95	7.15	6.50
P 8032 Dual cover wallplate to fit 2 lamps	8.95	8.00	7.25

Pigtail Neon

Requires series resistor ie. $R = 240k\Omega @ 240V AC$. Often found inside neon indicator switches. Dimensions 6Wx12H mm excluding legs.



ROHS

Price Each	RRP	10+	20+
S 4010 90-250V AC	1.25	1.10	1.00

12V Panel Mount Lamps

Mounting hole 7mm Ø. Mounting depth 29mm.



ROHS

Price Each	RRP	10+	20+
S 4025 Red 12V DC	1.90	1.70	1.50
S 4026 Green 12V DC	1.90	1.70	1.50

Panel Mount Neons



Price Each	Mtg. Hole (mm)	Depth (mm)	RRP	10+	20+
S 4020 Red 220V AC	4.5	20	4.05	3.65	3.25
S 4016 Red 220V AC	10	30	1.75	1.55	1.40
S 4019 Amber 250V AC	12.7	35	4.95	4.45	3.95
S 4015 Red 250V AC	8	33	3.45	3.05	2.75

'Grain Of Wheat' Globes

6x3.2mm globes as used in miniature equipment and model railways. Supplied without fly leads, 26mm legs.

	Voltage	Current
S 4060	1.5V	40mA
S 4061	3V	60mA
S 4062	9V	57mA
S 4063	12V	60mA



Price Each	RRP	10+	25+
ALL	0.95	0.85	0.75

MES Filament Globes & Holders

ROHS



S 4041



S 4055



S 4057

Current rating 300mA.
S 4041 1.5V
S 4042 2.5V
S 4045 6.0V
S 4047 12V

Price Each	RRP	10+	25+
ALL 1.5V	1.25	1.10	1.00
S 4055 Base to suit	0.90	0.81	0.72
S 4057 Plastic base to suit	2.90	2.60	2.30